

10/2

## ALPHA SELECT

10

# Planning and Configuration

## ALPHA SELECT

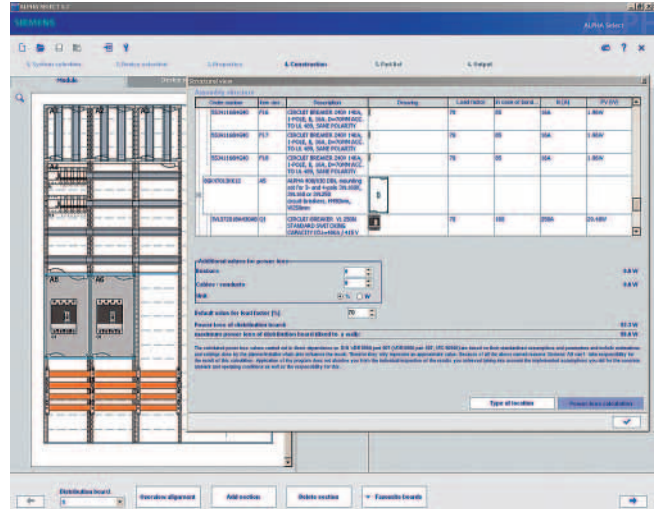
### Overview

Whether you are an installation engineer or a control cabinet engineer, an electrical wholesaler or a planner – the software ALPHASELECT makes it quicker and easier than ever before to plan and configure distribution boards and meter cabinets. Easy-to-use, intuitive functions accompany you step-by-step through the entire project, from planning to installation. Configuration errors are virtually impossible thanks to collision tests and configuration rules saved in the program.

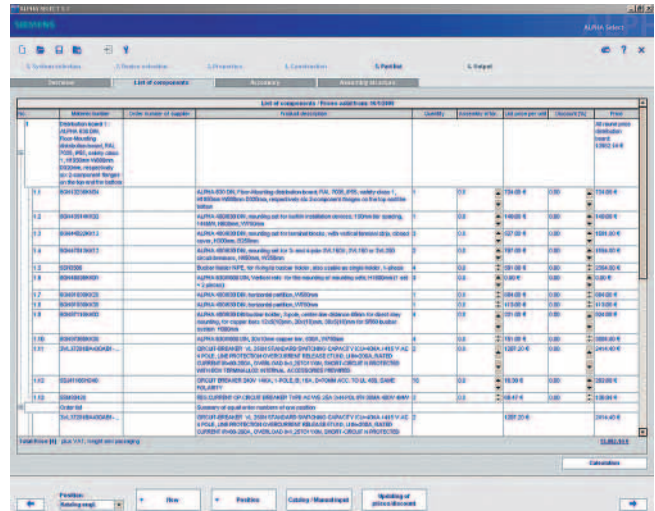
ALPHA SELECT comprises:

- ALPHA SIMBOX small distribution boards
- ALPHA 400-ZS meter cabinets
- ALPHA distribution boards
- ALPHA 8HP molded-plastic distribution boards
- ALPHA BOX

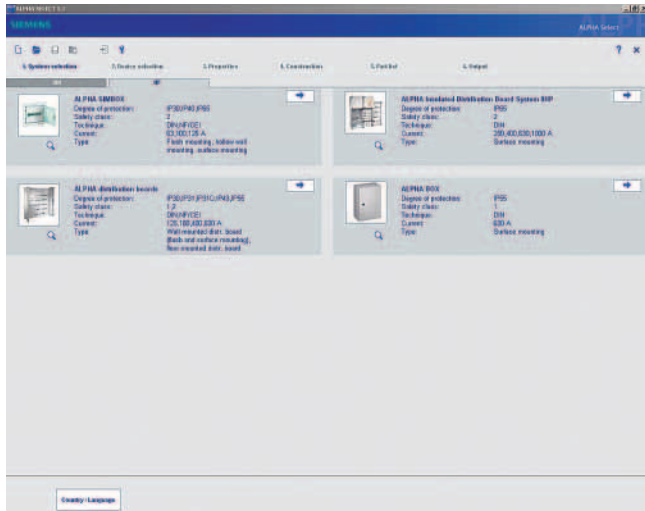
In addition you can use the electronic catalogs (EGH selection catalog and CA 01) to select BETA low-voltage circuit protection products, GAMMA *instabus* products (for building management) and many other items from the Siemens Industry product selection.



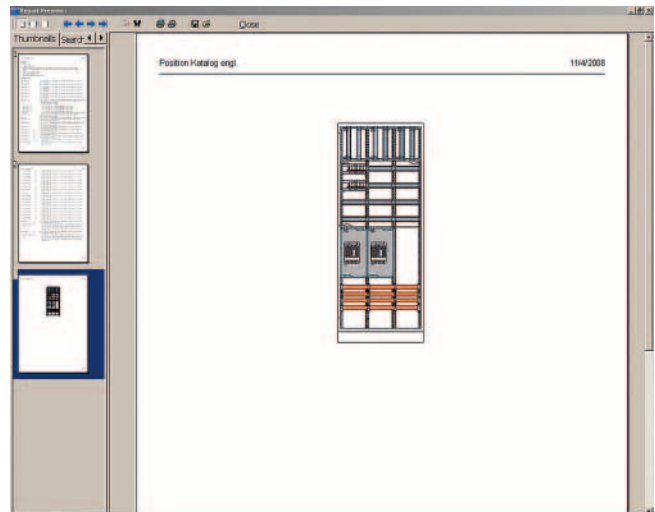
Calculation of power loss



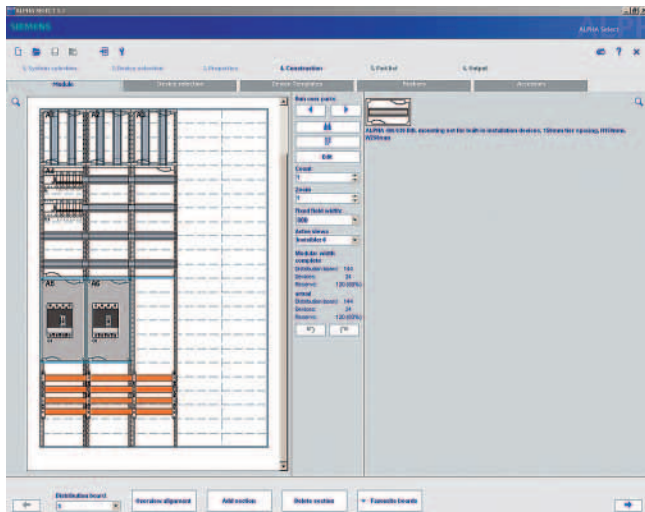
Parts list with calculation



Selection of the ALPHA distribution system



Workshop edition: configuration with layer representation



Distribution board equipment, front view

The process is started by selecting a suitable distribution system. By specifying the required degree of protection, safety class and dimensions, you will then find the right distribution board. Finally, simply select the assembly kits, devices and accessories of your choice using drag & drop. Essential accessories are determined automatically.

The graphic display enables individual levels, e.g. of covers, equipment racks or devices, to be visualized, rendered transparent and hidden so that the user can obtain an overview of already configured components at any time.

A new feature in V5.0 and higher is the power loss calculation function. This compares the calculated power loss values of the devices installed in the distribution board with the dissipatable power loss of the distribution board, giving due consideration to the point of installation and the permissible overtemperature (related to 35 °C ambient temperature).

Frequently required components can be saved as favorites for integration in other projects at any time.

Used in conjunction with existing calculation aids, users are able to tailor parts lists, assembly drawings and assembly structures to individual requirements and output as both a hard copy and in electronic form.

In addition to planning and calculation in the program itself, this enables the user to produce parts lists and graphic documentation, which can be submitted to customers along with a quotation, or as an aid to ordering any components required.

The workshop edition, which comprises a structured list of distribution boards and their parts, as well as a graphic representation of various levels chosen by the user, directly supports the building of distribution boards configured using ALPHA SELECT.

<http://www.siemens.com/alpha-select>

## Benefits

- Cabinet selection: simple selection of cabinet system, degree of protection, safety class and dimensions
- Positioning of assembly kits and devices using drag & drop
- Automatic determination of key accessories
- Numbering of assembly kits in the assembly drawing
- Automatic issue of item codes for devices
- Calculation of power loss
- Differentiated calculation options, including allowance made for assembly work
- Listing in the assembly structure of devices placed in the assembly kits, including numbering of the assembly kits and the item codes of the devices.
- Easy drawing up of quotations for projects: clearly arranged output selection for parts lists, assembly drawing and assembly structure.
- Clearly arranged calculation aids. Calculations for individual items and assembly, for material surcharges, shipment costs, discounts and miscellaneous extras are easy to perform in the parts list. Also, standard discounts for each price group can be saved in the memory.
- Quotations with individual company logo are possible.

## Technical specifications

ALPHA SELECT system requirements:

- Processor: from 1 GHz
- Main memory: minimum 512 MB
- Operating system: VISTA / XP / 2000 / NT 4 (Service Pack 5)
- Free hard disk space: 100 ... 500 MB (depending on the number of modules installed)
- Display resolution: minimum 1024x768 with 16-bit color intensity

## More information

Support for planning and configuration is available from:

Tel.: +49 180 5050 222

Fax: +49 180 5050 223

e-mail: [ad.support@siemens.com](mailto:ad.support@siemens.com)

# Planning and Configuration

Notes

10

