

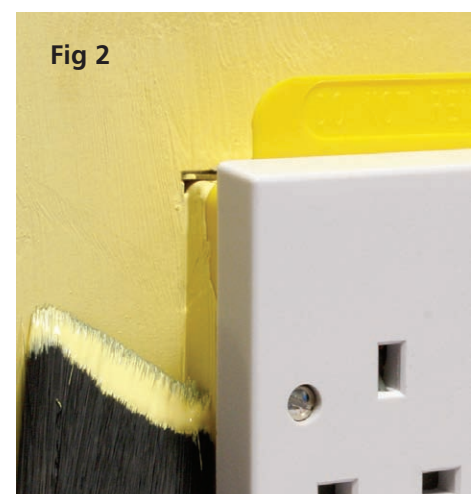
Save Time, Save Money with Safety Shield

Safety Shield is a new product that allows electricians to complete first and second fix at the same time.



Ideal for refurbishment and rewire contracts (such as Decent Homes projects) where it's necessary to get the power back on and keep the installation fully functional while waiting for other trades to complete their work. For example refurbishment of a kitchen will require the first fix electrical installation some time before the plastering is repaired and the finishing touches of the tiling are applied. So what will the customer do for power and lighting in the meantime? **SAFETYSHIELD!**

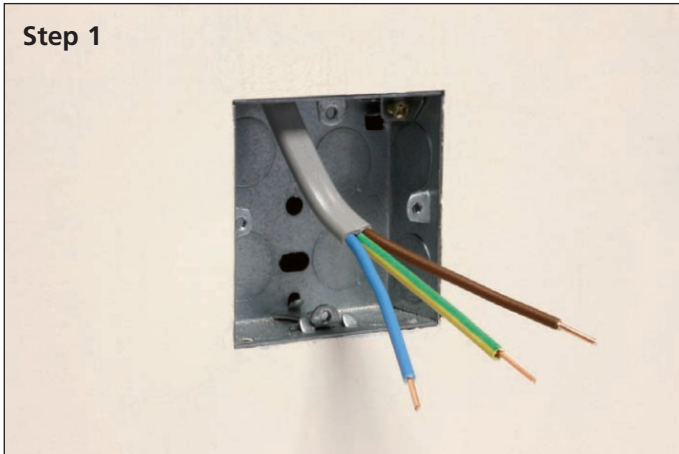
- Saves time and money.
- Fits between backbox and accessory.
- Allows electrical power to be returned safely before building work is complete (**Fig 1**).
- Electrician can complete first and second fix at the same time, no need to return to site after other trades have completed their work.
- Provides working space for plastering, plaster patching, tiling, wallpapering and paintwork (**Fig 2**).
- A shower cap or plastic bag should be used to keep the accessory clean and free from dust while work is completed.
- Provides a frame for plastering and plaster patching and prevents the ingress of foreign bodies such as grout plaster etc.
- Provides a trim border for tiling wallpapering and a "cutting in" edge for paintwork.
- A range of sizes are available to cater for single and twin accessories and different depths for wall finish i.e. plaster, tile, wallpaper, paint etc.
- Safety Shield is currently approved and used by Bramall Construction, Bullock, Connaught, Lovell and Wates.



List Number	Description	Depth
SS170	1 Gang	15mm
SS270	2 Gang	15mm
SSD170	1 Gang	30mm
SSD270	2 Gang	30mm

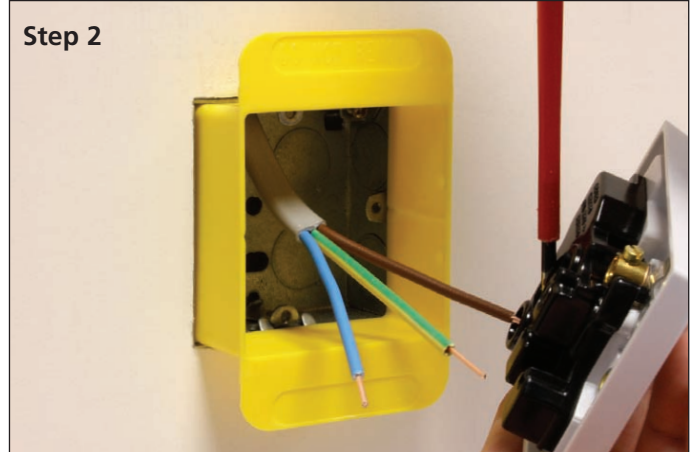
Step by step guide to using Safety Shield

Step 1



First fix - backbox and wiring installed as usual.

Step 2



Second fix - fit Safety Shield, along with socket and complete tests.

Step 3



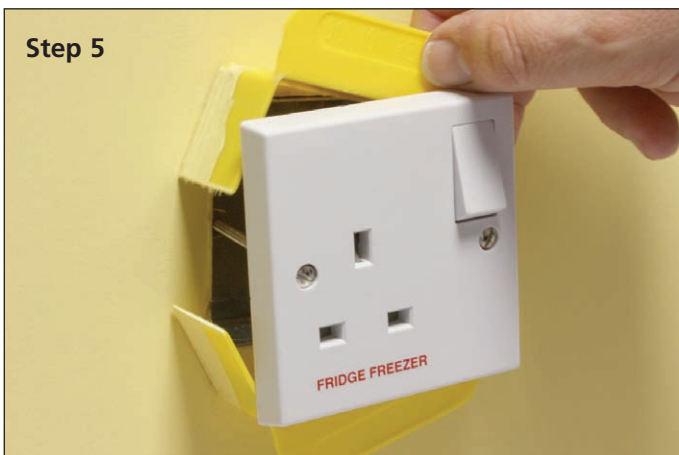
Electrical supply is safely maintained during remaining building work, electrician can leave site.

Step 4



Plaster, patch, tile or paint. A shower cap or plastic bag should be used to keep the accessory clean and free from dust while this work is completed.

Step 5



Remove fixing screws, snap and remove Safety Shield, replace fixing screws, carry out final checks & tests.

Step 6



Job complete.

Above installation process is as used by the companies mentioned overleaf. All electrical installation work should be carried out by qualified competent persons, to BS7671 IEE Wiring Regulations.

For more information or to purchase Safety Shield products, contact your local Electrical Wholesaler.