



Safety Alarms and
Fire Rated Downlighters

SAFETY ALARMS AND FIRE RATED DOWNLIGHTERS

Acknowledged as one of the leading brands in the UK and in British Standard markets around the world, Appleby offers a wide range of quality products which now includes safety alarms and downlighters.

Safety Alarms

Appleby safety alarms are designed, manufactured and tested in accordance with recognised product standards, and supported by extended guarantees.

The manufacturing plant is recognised for product safety and sustainability.

The products are RoHS and REACH compliant and the factory operates to the internationally recognised ISO9001 standard for quality.

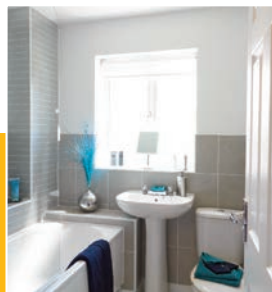
Residential Downlighters

Appleby interior lighting includes an extensive range of Fire Rated Downlighters suitable for both modern and traditional installations.

Downlighters are available in a variety of finishes and are supplied complete with energy efficient non-dimmable GU10 LED lamps. Available in either IP20 or IP65 format these Fire Rated downlighters incorporate a number of features and satisfy the requirements of 30, 60 and 90 minute fire resistance.



Appleby interior downlighters are independently tested to BS standards and are RoHS, Eco Design Directive and EMC compliant.





CONTENTS

Optical Smoke Alarm & Heat Alarm	2
Carbon Monoxide Alarm	3
Residential Downlighters	4
Technical Data	5

- Dust cover included
- 9v backup battery included
- Easy installation
- Test/hush facility - Optical and Heat alarm
- Test/reset facility - CO alarm
- Interlink capability



- GU10 LED Lamp included
- Replacement lamp GU10 (5W)
- White or Warm White
- IP20 and IP65
- 3 decorative finishes

Appleby has always been a name synonymous with reliability and value, committed to adding extra quality features.

Appleby is a part of Electrium, one of the UK's largest electrical installation equipment producers serving UK and Export, British Standard markets.

OPTICAL SMOKE ALARM AND HEAT ALARM

**D230OSA**

OPTICAL SMOKE ALARM

BS EN 14604:2005

List No	Description
D230OSA	230V mains powered Optical smoke alarm with 9V alkaline battery backup

Features

- 230V AC
- 9V alkaline battery back up included.
- 6 year warranty.
- Self test on sensor & self diagnostic feature.
- Easy installation.
- Dust cover.

Dimensions

Diameter 120mm

**D230HA**

HEAT ALARM

BS 5446-2: 2003

List No	Description
D230HA	230V mains powered Heat alarm with 9V alkaline battery backup

Features

- 230V AC
- 9V alkaline battery back up included.
- 6 year warranty.
- Self test on sensor & self diagnostic feature.
- Easy installation.
- Dust cover.

Dimensions

Diameter 123mm

CARBON MONOXIDE ALARM



D230COA



D230UP

CARBON MONOXIDE ALARM

BS EN 50291-1:2010

List No	Description
D230COA	230V mains powered Carbon Monoxide alarm with 9V alkaline battery backup

Features

- 230V AC
- 9V alkaline battery back up included.
- 5 year warranty.
- Self test on sensor & self diagnostic feature.
- Easy installation.

For CO alarm locations see installation instructions supplied with product

Dimensions

Height	46mm
Width	130mm
Depth	75mm

PATTRESS

BS 5733

List No	Description
D230UP	Pattress for installing D230OSA & D230HA

Features

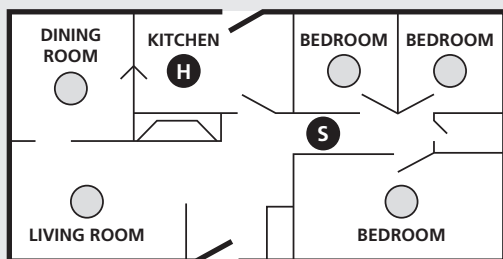
- Made from flame retardant thermoplastic
- Normally open normally closed or common
- 2 x 28mm & 2 x 20mm knockouts
- Integrated terminal block

Dimensions

Diameter:	110mm
Depth:	22mm

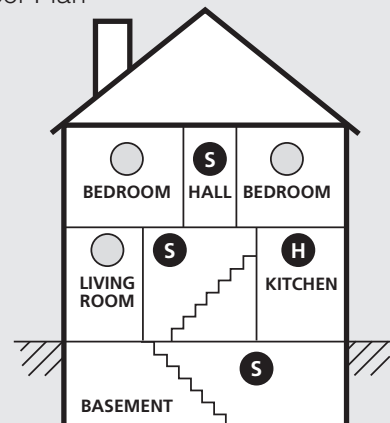
SMOKE AND HEAT ALARMS Typical locations (for illustrative purposes only).

Single Floor Plan



- Typical locations for Minimum Protection
- Typical locations for Additional Protection

Multiple Floor Plan



RESIDENTIAL DOWNLIGHTERS



IP20 RESIDENTIAL FIRE RATED DOWNLIGHTERS (including lamp)

List No	Description
D1002WHNR-C	LED 5W downlighter fixed, 4000K, white
D1002PCNR-C	LED 5W downlighter fixed, 4000K, white
D1002BCNR-C	LED 5W downlighter fixed, 4000K, white
D1002WHNR-W	LED 5W downlighter fixed, 3000K, warm white
D1002PCNR-W	LED 5W downlighter fixed, 3000K, warm white
D1002BCNR-W	LED 5W downlighter fixed, 3000K, warm white

Features

- Supplied complete with LED lamp
- 5W (Luminous Flux 400lm) 3000K warm white or 4000K white lamp
- Beam angle 38°
- GU10 lampholder
- Large loop in/loop out terminal block for easy installation
- Available in 3 finishes: Polished Chrome (PC), Brushed Chrome (BC) and White (WH)

Standard

BS EN 476-21:1987	Fire testing
BS 5250	Control of condensation
BS EN 60529	Ingress protection
EN 55015:2013	Radio disturbance characteristics
EN 60598-1:2015	General requirements for luminaires
EN 60598-2-2:2012	Requirements for recessed luminaires
EN 61000-3-2:2014	EMC
EN 61000-3-3:2013	EMC
EN 1547:2009	EMC
EN 62471:2008	Photobiological safety of lamps and lamp systems
EN 62493:2015	Assessment of lighting equipment related to human exposure to electromagnetic field
EN 62560:2012	Self-ballasted LED-lamps for general lighting services

Dimensions

Diameter	84.2mm (bezel) 70mm - 80mm (cut out)
----------	---

IP65 RESIDENTIAL FIRE RATED DOWNLIGHTERS (including lamp)

List No	Description
D1065WHNR-C	LED 5W downlighter fixed, 4000K, white
D1065PCNR-C	LED 5W downlighter fixed, 4000K, white
D1065BCNR-C	LED 5W downlighter fixed, 4000K, white
D1065WHNR-W	LED 5W downlighter fixed, 3000K, warm white
D1065PCNR-W	LED 5W downlighter fixed, 3000K, warm white
D1065BCNR-W	LED 5W downlighter fixed, 3000K, warm white

Features

- Supplied complete with LED lamp
- 5W (Luminous Flux 400lm) 3000K warm white or 4000K white lamp
- Beam angle 38°
- GU10 lampholder
- Large loop in/loop out terminal block for easy installation
- Available in 3 finishes: Polished Chrome (PC), Brushed Chrome (BC) and White (WH)

Standard

BS EN 476-21:1987	Fire testing
BS 5250	Control of condensation
BS EN 60529	Ingress protection
EN 55015:2013	Radio disturbance characteristics
EN 60598-1:2015	General requirements for luminaires
EN 60598-2-2:2012	Requirements for recessed luminaires
EN 61000-3-2:2014	EMC
EN 61000-3-3:2013	EMC
EN 1547:2009	EMC
EN 62471:2008	Photobiological safety of lamps and lamp systems
EN 62493:2015	Assessment of lighting equipment related to human exposure to electromagnetic field
EN 62560:2012	Self-ballasted LED-lamps for general lighting services

Dimensions

Diameter	86mm (bezel) 75mm - 80mm (cut out)
----------	---------------------------------------

SAFETY ALARM TECHNICAL DATA

	D230OSA	D230COA	D230HA
Reliability			
Detection Principal	Optical	Carbon Monoxide	Heat
Main Unit Life	10 years	5 years	10 years
Third Party Type Test	BS EN 14604:2005	BS EN 50291-1:2010	BS 5446-2:2003
Other Compliances	RoHS, EMC, LVD	RoHS, EMC, LVD	RoHS, EMC, LVD
Self Test	Yes	Yes	Yes
Warranty	6 years	5 years	6 years
CE Mark	Yes	Yes	Yes
Operating Environment			
Operating Temperature Range	0° - 40°C	0° - 40°C	0° - 40°C
Humidity	5 - 95% RH	5 - 95% RH	5 - 95% RH
IP Rating	IP40	IP42	IP40
Electrical and Interconnection			
Voltage	230V	230V	230V
Frequency	50Hz	50Hz	50Hz
Power supply	Mains powered, with 9V alkaline battery backup	Mains powered, with 9V alkaline battery backup	Mains powered, with 9V alkaline battery backup
User Interface			
Visual Indicator	Low battery warning, LED operating indicator, alarm indicator	Low battery warning, LED operating indicator, alarm indicator	Low battery warning, LED operating indicator, alarm indicator
Button	Test / Hush Button	Test / Reset Button	Test / Hush Button
Product			
Weight	0.165kg	0.150kg	0.145kg
Dimensions	120mm diameter	130mm x 75mm x 46mm	123mm diameter

DOWNLIGHTER TECHNICAL DATA

	IP65 Warm White (3000K)	IP65 White (4000K)	IP20 Warm White (3000K)	IP20 White (4000K)
Manufacturing				
Model	D1065WHNR-W D1065PCNR-W D1065BCNR-W	D1065WHNR-C D1065PCNR-C D1065BCNR-C	D1020WHNR-W D1020PCNR-W D1020BCNR-W	D1020WHNR-C D1020PCNR-C D1020BCNR-C
Description	LED 5W, 3000K downlight fire rated, fixed	LED 5W, 4000K downlight fire rated, fixed	LED 5W, 3000K downlight fire rated, fixed	LED 5W, 4000K downlight fire rated, fixed
CE Mark	Yes	Yes	Yes	Yes
Construction				
Shape	Round	Round	Round	Round
Gasket	Neoprene	Neoprene	Intumescent	Intumescent
Mounting Type	Flush	Flush	Flush	Flush
Application				
Standard	BS EN 62493:2015 BS EN 62471:2008	BS EN 62493:2015 BS EN 62471:2008	BS EN 62493:2015 BS EN 62471:2008	BS EN 62493:2015 BS EN 62471:2008
Product				
Weight	0.3kg	0.3kg	0.3kg	0.3kg
Dimensions(bezel)	86mm diameter	86mm diameter	84.2mm diameter	84.2mm diameter
(body)	63mm diameter	63mm diameter	64mm diameter	64mm diameter
Performance				
Lamp Rating	5W LED	5W LED	5W LED	5W LED
Fire Rating	30, 60, 90 minutes	30, 60, 90 minutes	30, 60, 90 minutes	30, 60, 90 minutes
Max. Ambient Temperature	40°C	40°C	40°C	40°C
Min. Ambient Temperature	-20°C	-20°C	-20°C	-20°C
Electrical				
Voltage	230V	230V	230V	230V
Frequency	50Hz	50Hz	50Hz	50Hz

Precaution: DO NOT pack insulation material around fitting

electrium

**ELECTRIUM SALES LIMITED
A SIEMENS COMPANY**

Commercial Centre, Lakeside Plaza,
Walkmill Lane, Bridgtown,
Cannock WS11 0XE.
eMail: info@electrium.co.uk

www.electrium.co.uk

UK SALES

Telephone: 01543 455030
Facsimile: 01543 455031
eMail: appleby.sales@electrium.co.uk

TECHNICAL

Telephone: 01543 438330
Facsimile: 01543 438321
eMail: appleby.technical@electrium.co.uk

EXPORT SALES

Telephone: +44 1543 455049
Facsimile: +44 1543 455048
eMail: export@electrium.co.uk

DUBAI OFFICE

Telephone: +971 4 3660684
Facsimile: +971 4 3660676
eMail: export@electrium.co.uk



[@ElectriumNews](#) or download the APP

Although every effort has been made to ensure accuracy in the compilation of the technical detail within this publication, specifications and performance data are constantly changing. Latest details can be obtained from Appleby.

Publication No. AP2374c 4/2020
Printed in England.