

electrium



APPLEBY

Safety Alarms and
Fire Rated Downlighters



electrium

LAKEBIDE
POINT
AD 5005

Electrium Sales Ltd. is a Siemens company,
Appleby is part of Electrium Sales Ltd.



CONTENTS

| | |
|----------------------------------|---|
| Optical Smoke Alarm & Heat Alarm | 2 |
| Carbon Monoxide Alarm | 3 |
| Residential Downlighters | 4 |
| Technical Data | 5 |

- Dust cover included
- 9v backup battery included
- Easy installation
- Test/hush facility - Optical and Heat alarm
- Test/reset facility - CO alarm
- Interlink capability



- GU10 LED Lamp included
- Replacement lamp GU10 (5W)
- White or Warm White
- IP20 and IP65
- 3 decorative finishes

Appleby has always been a name synonymous with reliability and value, committed to adding extra quality features.

OPTICAL SMOKE ALARM AND HEAT ALARM

**D230OSA**

OPTICAL SMOKE ALARM

BS EN 14604:2005

| List No | Description |
|----------------|--|
| D230OSA | 230V mains powered Optical smoke alarm with 9V alkaline battery backup |

Features

- 230V AC
- 9V alkaline battery back up included.
- 6 year warranty.
- Self test on sensor & self diagnostic feature.
- Easy installation.
- Dust cover.

Dimensions

Diameter 120mm

**D230HA**

HEAT ALARM

BS 5446-2: 2003

| List No | Description |
|---------------|---|
| D230HA | 230V mains powered Heat alarm with 9V alkaline battery backup |

Features

- 230V AC
- 9V alkaline battery back up included.
- 6 year warranty.
- Self test on sensor & self diagnostic feature.
- Easy installation.
- Dust cover.

Dimensions

Diameter 123mm

CARBON MONOXIDE ALARM



D230COA

CARBON MONOXIDE ALARM

BS EN 50291-1:2010

| List No | Description |
|----------------|--|
| D230COA | 230V mains powered Carbon Monoxide alarm with 9V alkaline battery backup |

Features

- 230V AC
- 9V alkaline battery back up included.
- 5 year warranty.
- Self test on sensor & self diagnostic feature.
- Easy installation.

For CO alarm locations see installation instructions supplied with product

Dimensions

| | |
|--------|-------|
| Height | 46mm |
| Width | 130mm |
| Depth | 75mm |



D230UP

PATRESS

BS 5733

| List No | Description |
|---------------|--|
| D230UP | Pattress for installing D230OSA & D230HA |

Features

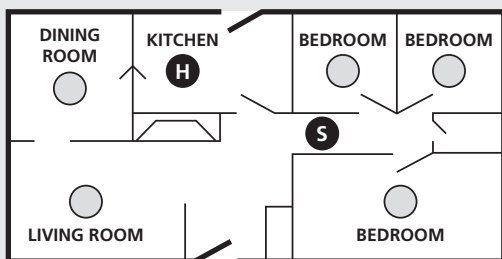
- Made from flame retardant thermoplastic
- 2 x 28mm & 2 x 20mm knockouts
- Integrated terminal block

Dimensions

| | |
|-----------|-------|
| Diameter: | 110mm |
| Depth: | 22mm |

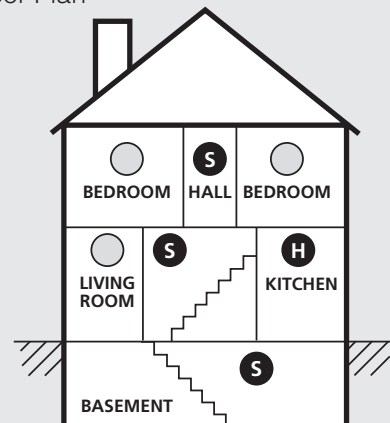
SMOKE AND HEAT ALARMS Typical locations (for illustrative purposes only).

Single Floor Plan



- Typical locations for Minimum Protection
- Typical locations for Additional Protection

Multiple Floor Plan



RESIDENTIAL DOWNLIGHTERS



IP20 RESIDENTIAL FIRE RATED DOWNLIGHTERS (including lamp)

| List No | Description |
|--------------------|---|
| D1002WHNR-C | LED 5W downlighter fixed, 4000K, white |
| D1002PCNR-C | LED 5W downlighter fixed, 4000K, white |
| D1002BCNR-C | LED 5W downlighter fixed, 4000K, white |
| D1002WHNR-W | LED 5W downlighter fixed, 3000K, warm white |
| D1002PCNR-W | LED 5W downlighter fixed, 3000K, warm white |
| D1002BCNR-W | LED 5W downlighter fixed, 3000K, warm white |

Features

- Supplied complete with LED lamp
- 5W (Luminous Flux 400lm) 3000K warm white or 4000K white lamp
- Beam angle 38°
- GU10 lampholder
- Large loop in/loop out terminal block for easy installation
- Available in 3 finishes: Polished Chrome (PC), Brushed Chrome (BC) and White (WH)

Standard

| | |
|-------------------|---|
| BS EN 476-21:1987 | Fire testing |
| BS 5250 | Control of condensation |
| BS EN 60529 | Ingress protection |
| EN 55015:2013 | Radio disturbance characteristics |
| EN 60598-1:2015 | General requirements for luminaires |
| EN 60598-2-2:2012 | Requirements for recessed luminaires |
| EN 61000-3-2:2014 | EMC |
| EN 61000-3-3:2013 | EMC |
| EN 1547:2009 | EMC |
| EN 62471:2008 | Photobiological safety of lamps and lamp systems |
| EN 62493:2015 | Assessment of lighting equipment related to human exposure to electromagnetic field |
| EN 62560:2012 | Self-ballasted LED-lamps for general lighting services |

Dimensions

| | |
|----------|-----------------------|
| Diameter | 84.2mm (bezel) |
| | 70mm - 80mm (cut out) |

IP65 RESIDENTIAL FIRE RATED DOWNLIGHTERS (including lamp)

| List No | Description |
|--------------------|---|
| D1065WHNR-C | LED 5W downlighter fixed, 4000K, white |
| D1065PCNR-C | LED 5W downlighter fixed, 4000K, white |
| D1065BCNR-C | LED 5W downlighter fixed, 4000K, white |
| D1065WHNR-W | LED 5W downlighter fixed, 3000K, warm white |
| D1065PCNR-W | LED 5W downlighter fixed, 3000K, warm white |
| D1065BCNR-W | LED 5W downlighter fixed, 3000K, warm white |

Features

- Supplied complete with LED lamp
- 5W (Luminous Flux 400lm) 3000K warm white or 4000K white lamp
- Beam angle 38°
- GU10 lampholder
- Large loop in/loop out terminal block for easy installation
- Available in 3 finishes: Polished Chrome (PC), Brushed Chrome (BC) and White (WH)

Standard

| | |
|-------------------|---|
| BS EN 476-21:1987 | Fire testing |
| BS 5250 | Control of condensation |
| BS EN 60529 | Ingress protection |
| EN 55015:2013 | Radio disturbance characteristics |
| EN 60598-1:2015 | General requirements for luminaires |
| EN 60598-2-2:2012 | Requirements for recessed luminaires |
| EN 61000-3-2:2014 | EMC |
| EN 61000-3-3:2013 | EMC |
| EN 1547:2009 | EMC |
| EN 62471:2008 | Photobiological safety of lamps and lamp systems |
| EN 62493:2015 | Assessment of lighting equipment related to human exposure to electromagnetic field |
| EN 62560:2012 | Self-ballasted LED-lamps for general lighting services |

Dimensions

| | |
|----------|-----------------------|
| Diameter | 86mm (bezel) |
| | 75mm - 80mm (cut out) |

SAFETY ALARM TECHNICAL DATA

| | D230OSA | D230COA | D230HA |
|---------------------------------------|---|---|---|
| Reliability | | | |
| Detection Principal | Optical | Carbon Monoxide | Heat |
| Main Unit Life | 10 years | 5 years | 10 years |
| Third Party Type Test | BS EN 14604:2005 | BS EN 50291-1:2010 | BS 5446-2:2003 |
| Other Compliances | RoHS, EMC, LVD | RoHS, EMC, LVD | RoHS, EMC, LVD |
| Self Test | Yes | Yes | Yes |
| Warranty | 6 years | 5 years | 6 years |
| CE Mark | Yes | Yes | Yes |
| Operating Environment | | | |
| Operating Temperature Range | 0° - 40°C | 0° - 40°C | 0° - 40°C |
| Humidity | 5 - 95% RH | 5 - 95% RH | 5 - 95% RH |
| IP Rating | IP40 | IP42 | IP40 |
| Electrical and Interconnection | | | |
| Voltage | 230V | 230V | 230V |
| Frequency | 50Hz | 50Hz | 50Hz |
| Power supply | Mains powered, with 9V alkaline battery backup | Mains powered, with 9V alkaline battery backup | Mains powered, with 9V alkaline battery backup |
| User Interface | | | |
| Visual Indicator | Low battery warning, LED operating indicator, alarm indicator | Low battery warning, LED operating indicator, alarm indicator | Low battery warning, LED operating indicator, alarm indicator |
| Button | Test / Hush Button | Test / Reset Button | Test / Hush Button |
| Product | | | |
| Weight | 0.165kg | 0.150kg | 0.145kg |
| Dimensions | 120mm diameter | 130mm x 75mm x 46mm | 123mm diameter |

DOWNLIGHTER TECHNICAL DATA

| | IP65 Warm White (3000K) | IP65 White (4000K) | IP20 Warm White (3000K) | IP20 White (4000K) |
|--------------------------|---|---|---|---|
| Manufacturing | | | | |
| Model | D1065WHNR-W D1065PCNR-W D1065BCNR-W | D1065WHNR-C D1065PCNR-C D1065BCNR-C | D1020WHNR-W D1020PCNR-W D1020BCNR-W | D1020WHNR-C D1020PCNR-C D1020BCNR-C |
| Description | LED 5W, 3000K downlight fire rated, fixed | LED 5W, 4000K downlight fire rated, fixed | LED 5W, 3000K downlight fire rated, fixed | LED 5W, 4000K downlight fire rated, fixed |
| CE Mark | Yes | Yes | Yes | Yes |
| Construction | | | | |
| Shape | Round | Round | Round | Round |
| Gasket | Neoprene | Neoprene | Intumescent | Intumescent |
| Mounting Type | Flush | Flush | Flush | Flush |
| Application | | | | |
| Standard | BS EN 62493:2015 BS EN 62471:2008 | BS EN 62493:2015 BS EN 62471:2008 | BS EN 62493:2015 BS EN 62471:2008 | BS EN 62493:2015 BS EN 62471:2008 |
| Product | | | | |
| Weight | 0.3kg | 0.3kg | 0.3kg | 0.3kg |
| Dimensions(bezel) | 86mm diameter | 86mm diameter | 84.2mm diameter | 84.2mm diameter |
| (body) | 63mm diameter | 63mm diameter | 64mm diameter | 64mm diameter |
| Performance | | | | |
| Lamp Rating | 5W LED | 5W LED | 5W LED | 5W LED |
| Fire Rating | 30, 60, 90 minutes | 30, 60, 90 minutes | 30, 60, 90 minutes | 30, 60, 90 minutes |
| Max. Ambient Temperature | 40°C | 40°C | 40°C | 40°C |
| Min. Ambient Temperature | -20°C | -20°C | -20°C | -20°C |
| Electrical | | | | |
| Voltage | 230V | 230V | 230V | 230V |
| Frequency | 50Hz | 50Hz | 50Hz | 50Hz |

Precaution: DO NOT pack insulation material around fitting

electrium

ELECTRIUM SALES LIMITED A SIEMENS COMPANY

Commercial Centre, Lakeside Plaza,
Walkmill Lane, Bridgtown,
Cannock WS11 0XE.
eMail: info@electrium.co.uk

www.electrium.co.uk

UK SALES

Telephone: 01543 455030
Facsimile: 01543 455031
eMail: appleby.sales@electrium.co.uk

TECHNICAL

Telephone: 01543 438330
Facsimile: 01543 438321
eMail: appleby.technical@electrium.co.uk

EXPORT SALES

Telephone: +44 1543 455049
Facsimile: +44 1543 455048
eMail: export@electrium.co.uk

DUBAI OFFICE

Telephone: +971 4 3660684
Facsimile: +971 4 3660676
eMail: export@electrium.co.uk



[@ElectriumNews](https://twitter.com/ElectriumNews) or download the APP

Although every effort has been made to ensure accuracy in the compilation of the technical detail within this publication, specifications and performance data are constantly changing. Latest details can be obtained from Appleby.

Publication No. AP2374d 1/2021